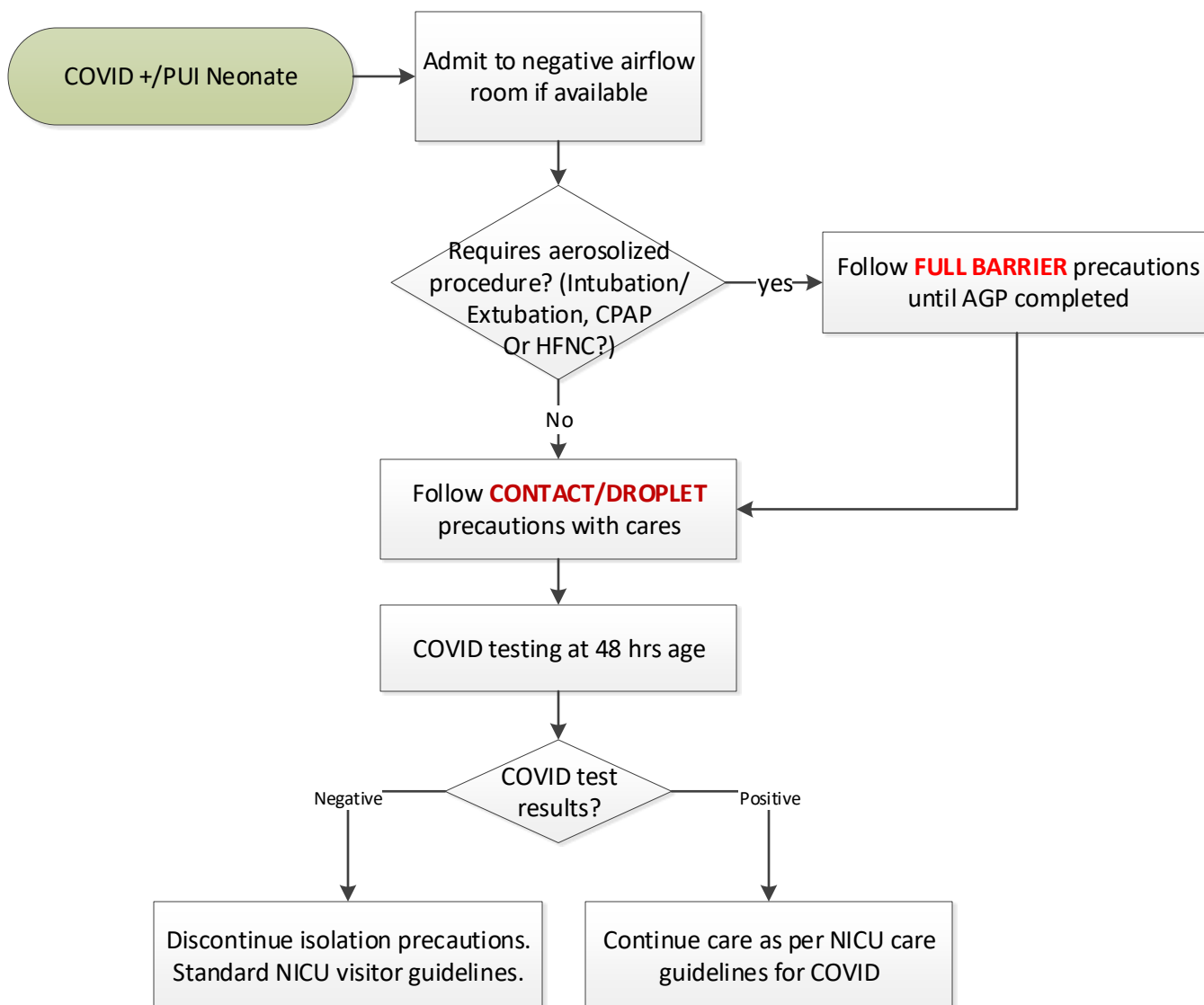


COVID-19 NICU Algorithm
NICU Care of COVID+ /PUI Infant
 Effective starting May 18, 2020



*** Maternal Visitation - COVID+/PUI**

Mother cannot visit baby in NICU or baby on NICU status until she has met *CDC criteria for discontinuation of isolation precautions*, which include the following:

For symptomatic mothers:

- At least 3 days (72 hours) have passed *since recovery*, defined as resolution of fever without the use of fever-reducing medications **and** improvement in respiratory symptoms (e.g., cough, shortness of breath);

and

- At least 10 days have passed *since symptoms first appeared*

For asymptomatic mothers with a positive COVID test:

- At least 10 days have passed since the date of the positive test **and** she remains asymptomatic

The healthy visitor (who was present for labor and delivery) is considered a close contact of mother and, therefore, has had direct exposure to a COVID PUI/COVID positive person. The healthy visitor cannot visit baby in NICU or baby on NICU status until they have met *CDC criteria for discontinuation of isolation precautions*:

- At least 10 days have passed since the date of the mother's positive test **and** the visitor remains asymptomatic