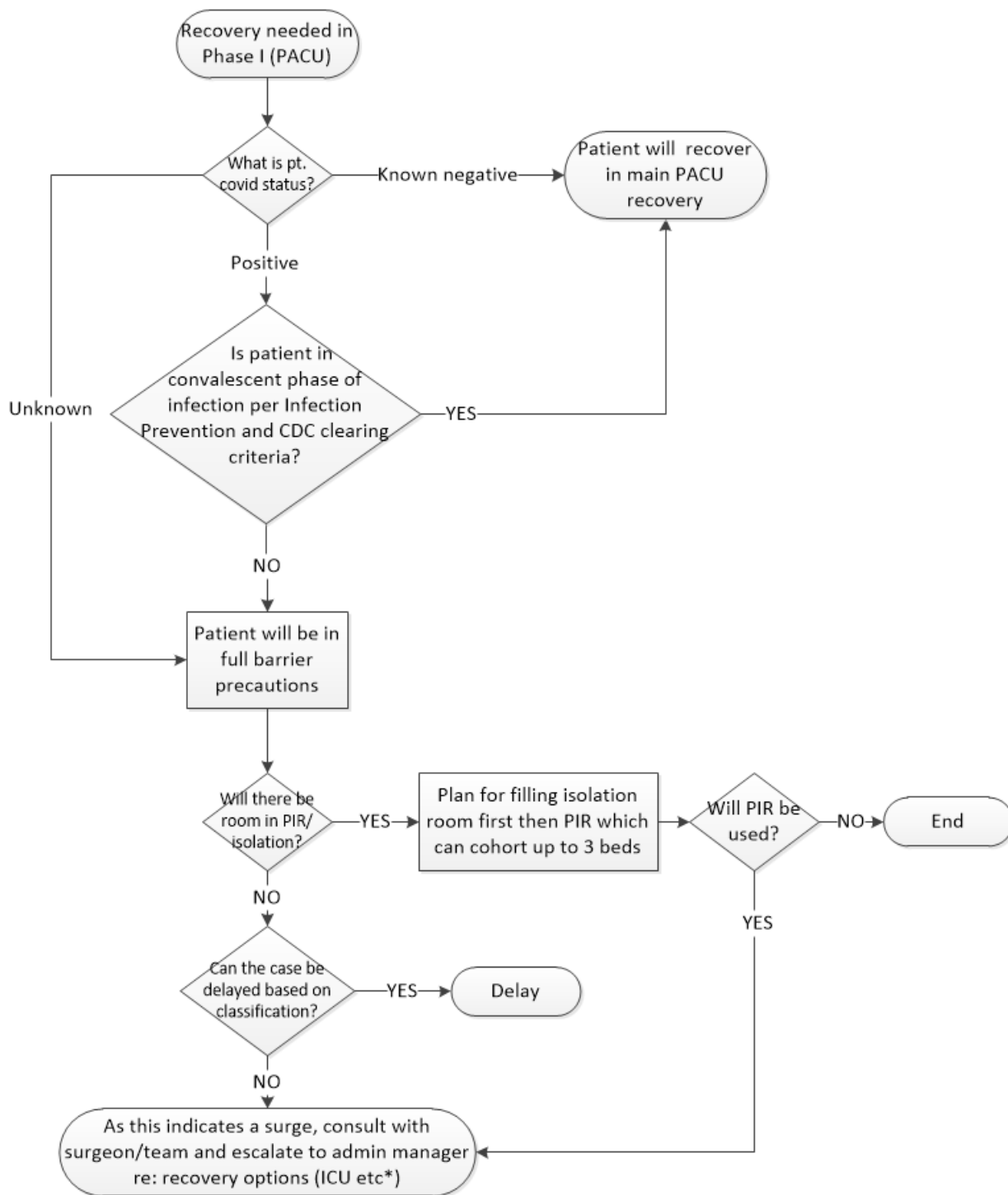


Pre-Procedure PACU Recovery Planning for North Memorial Health Hospital

February 2021—Version 1.0



*Team could consider recovery in the OR if absolutely necessary (depending on staffing, hours, etc.) PACU RN could go to the OR to help the CRNA, after which the patient would go to phase 2 (if same day surgery) or to their inpatient room.



Pre-Procedure PACU Recovery Planning for North Memorial Health Hospital

February 2021—Version 1.0

Changes Since Last Version

This document is active and further recommendations are forthcoming. It will be updated as additions develop.

Revision	Description of Changes	Approvals	Date
2	Tweaked wording re: consideration of recovery in OR	Infection Prevention Task Force / PACU / Anesthesia	2/15/21