

COVID-19 Algorithm

Home Visit

Effective: 8/9/21

* COVID-19 Person Under Investigation (PUI) Criteria – person has one or more of the following symptoms:

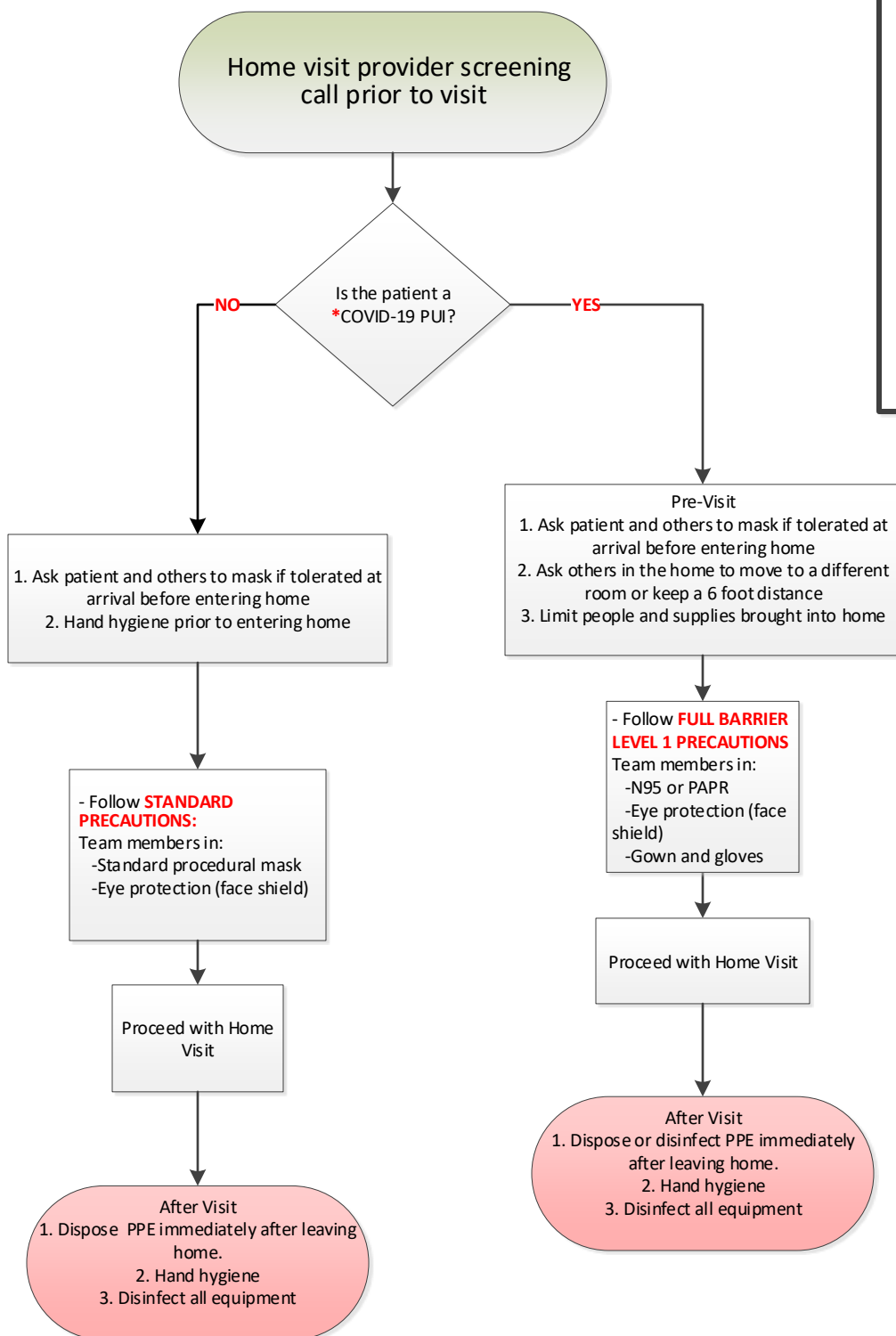
- Fever >100, chills or rigors
- Cough
- Shortness of breath or difficulty breathing
- Fatigue
- Muscle or body aches
- Headache
- New loss of taste or smell
- Sore throat
- Congestion or runny nose
- Nausea or vomiting
- Diarrhea
- Exacerbation of chronic medical condition
- Acute thromboembolic events

For HOSPICE Only: – person has one or more **NEW** PUI symptoms **NOT** consistent with disease progression

Hospice can disregard the last two symptoms on our standard PUI criteria ('Exacerbation of chronic medical conditions' and 'Acute thromboembolic events')

PPE Reuse Guidelines

Please refer to "MEP, PPE Re-use and FAQ" on the provider COVID internet page under PPE



Updates:

Updated to reflect latest CDC/MDH guidance for universal masking in health care setting and eye protection while providing direct care (both regardless of vaccination status).