

This algorithm covers the scheduling of elective outpatient appointments and includes:

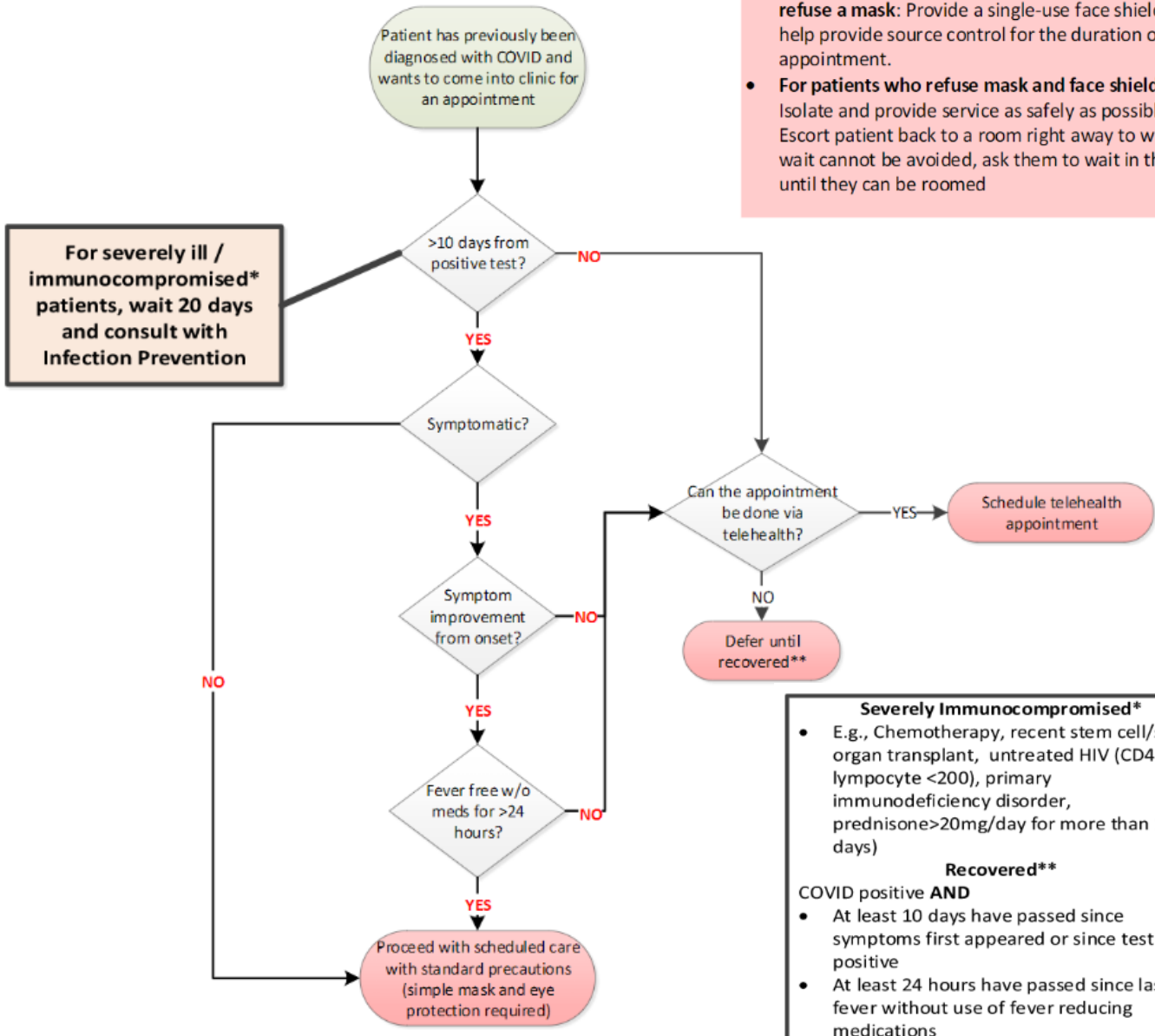
- Page 1: COVID Positive Patients
- Page 2: COVID Exposed Patients
- Page 3: COVID PUI Patients

KEY POINTS

Scheduling Elective* Outpatient Appointments for COVID Positive Patients

Elective outpatient Appointment: All Blaze Health preventative care appointments (ie. Well child, physicals, medical wellness, etc.)

- **For patients who cannot tolerate use of a mask or refuse a mask:** Provide a single-use face shield to help provide source control for the duration of appointment.
- **For patients who refuse mask and face shield:** Isolate and provide service as safely as possible. Escort patient back to a room right away to wait. If a wait cannot be avoided, ask them to wait in their car until they can be roomed



Severely Immunocompromised*

- E.g., Chemotherapy, recent stem cell/solid organ transplant, untreated HIV (CD4 T lymphocyte <200), primary immunodeficiency disorder, prednisone >20mg/day for more than 14 days)

Recovered**

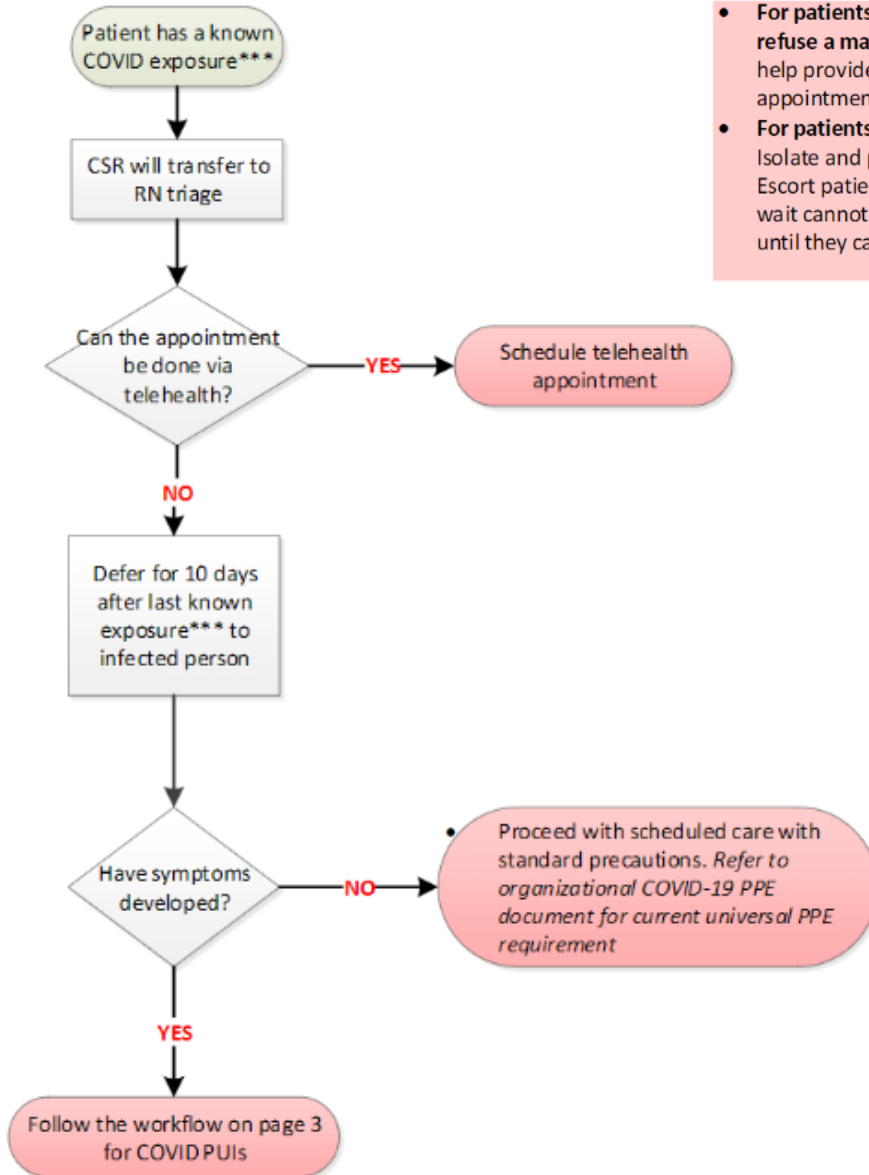
COVID positive **AND**

- At least 10 days have passed since symptoms first appeared or since test was positive
- At least 24 hours have passed since last fever without use of fever reducing medications



Scheduling Elective* Outpatient Appointments for COVID Exposed Patients

Elective outpatient Appointment: All Blaze Health preventative care appointments (ie. Well child, physicals, medical wellness, etc.)



- For patients who cannot tolerate use of a mask or refuse a mask: Provide a single-use face shield to help provide source control for the duration of appointment.
- For patients who refuse mask and face shield: Isolate and provide service as safely as possible. Escort patient back to a room right away to wait. If a wait cannot be avoided, ask them to wait in their car until they can be roomed

Recovered**
 COVID positive AND

- At least 10 days have passed since symptoms first appeared or since test was positive
- At least 24 hours have passed since last fever without use of fever reducing medications

*****Exposure: >15 minutes within 6 feet**

- Exposure to a person with COVID-19 who has symptoms in the period including 2 days before symptom onset until they met criteria for isolation discontinuation

OR

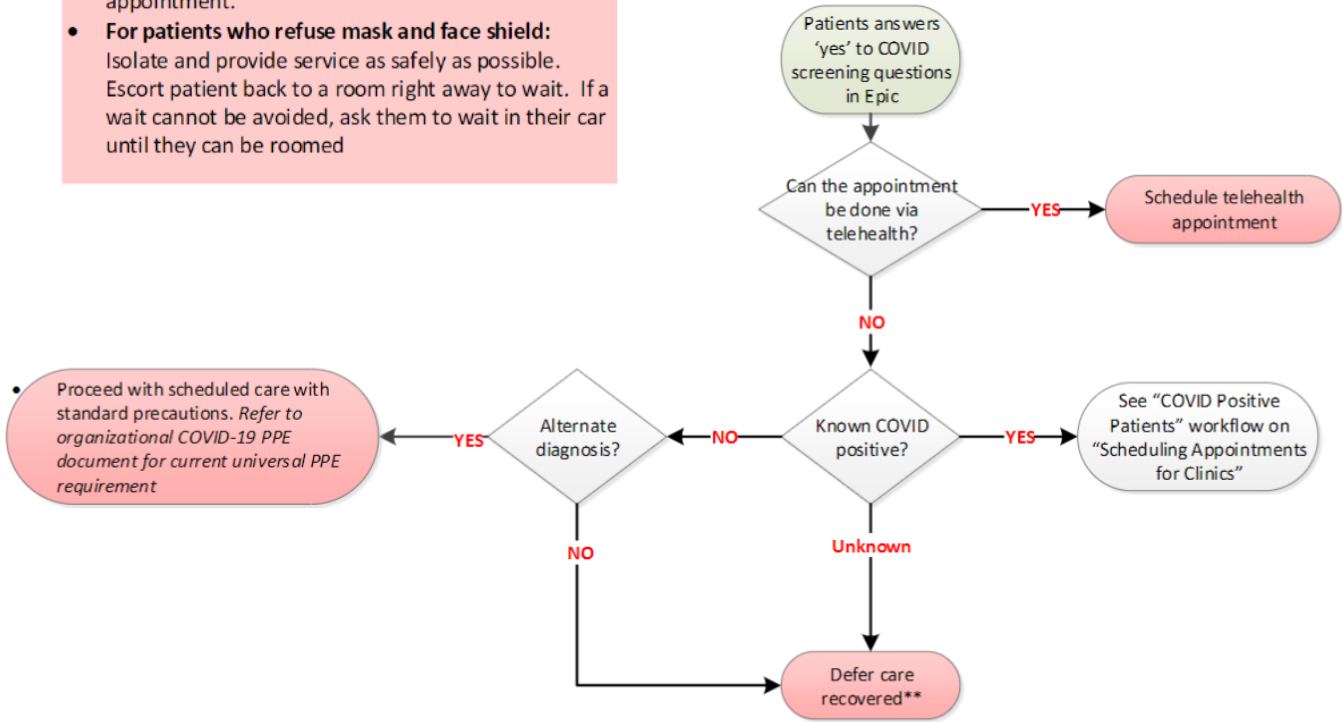
- Exposure to a person with COVID-19 who tested positive even without symptoms including 2 days before their last test and for 10 days following test



Scheduling Elective* Outpatient Appointments for COVID PUI Patients

Elective outpatient Appointment: All Blaze Health preventative care appointments (ie. Well child, physicals, medical wellness, etc.)

- For patients who cannot tolerate use of a mask or refuse a mask: Provide a single-use face shield to help provide source control for the duration of appointment.
- For patients who refuse mask and face shield: Isolate and provide service as safely as possible. Escort patient back to a room right away to wait. If a wait cannot be avoided, ask them to wait in their car until they can be roomed



Recovered**

COVID positive **AND**

- At least 10 days have passed since symptoms first appeared or since test was positive
- At least 24 hours have passed since last fever without use of fever reducing medications



Infection Prevention Task Force

This team represents expertise in infection prevention and operations.. If you would like further information on infection prevention components of this pathway, please contact Infection Prevention (Robbinsdale) at Main line: (763) 581-4660 Mon-Fri: 8am-4:30pm, Rounder on-call M-F: (612) 580-0218 or (Maple Grove) at (763) 581-1234

MEMBERS:

Infection Prevention: Stephanie Swanson, Katherine Grimm

Infectious Disease: Leslie Baken

Clinical: Jeffrey Vespa, Pamela Doorenbos

Clinical Operations: Wendy Ulferts, Steve Horstmann, Sheryl Vugteveen, Lindsay Wacker

Clinics: Kate Sullivan , Bridget Peppin, Aleda Jordan

If you would like further information about Clinical Programs and Integration, please contact the System Medical Director for Quality, Jeffrey Vespa, MD— Jeffrey.Vespa@NorthMemorial.com or Anna Rees, Manager—Anna.Rees@NorthMemorial.com

Revision History

This document is active and further recommendations are forthcoming. It will be updated as additions develop.

Revision	Description of Changes	Approvals	Date
7.0	Page 1: Updated 'no' arrow to more clearly point to 'can appointment be done via tele-health' decision point. Page 2/3: Updated reference to PPE to 'Refer to organizational PPE document.' Changed to 10 days post exposure per current CDC guidance. Changed flow to remove separate paths based on vaccination status.	IPTF	10-17-2022