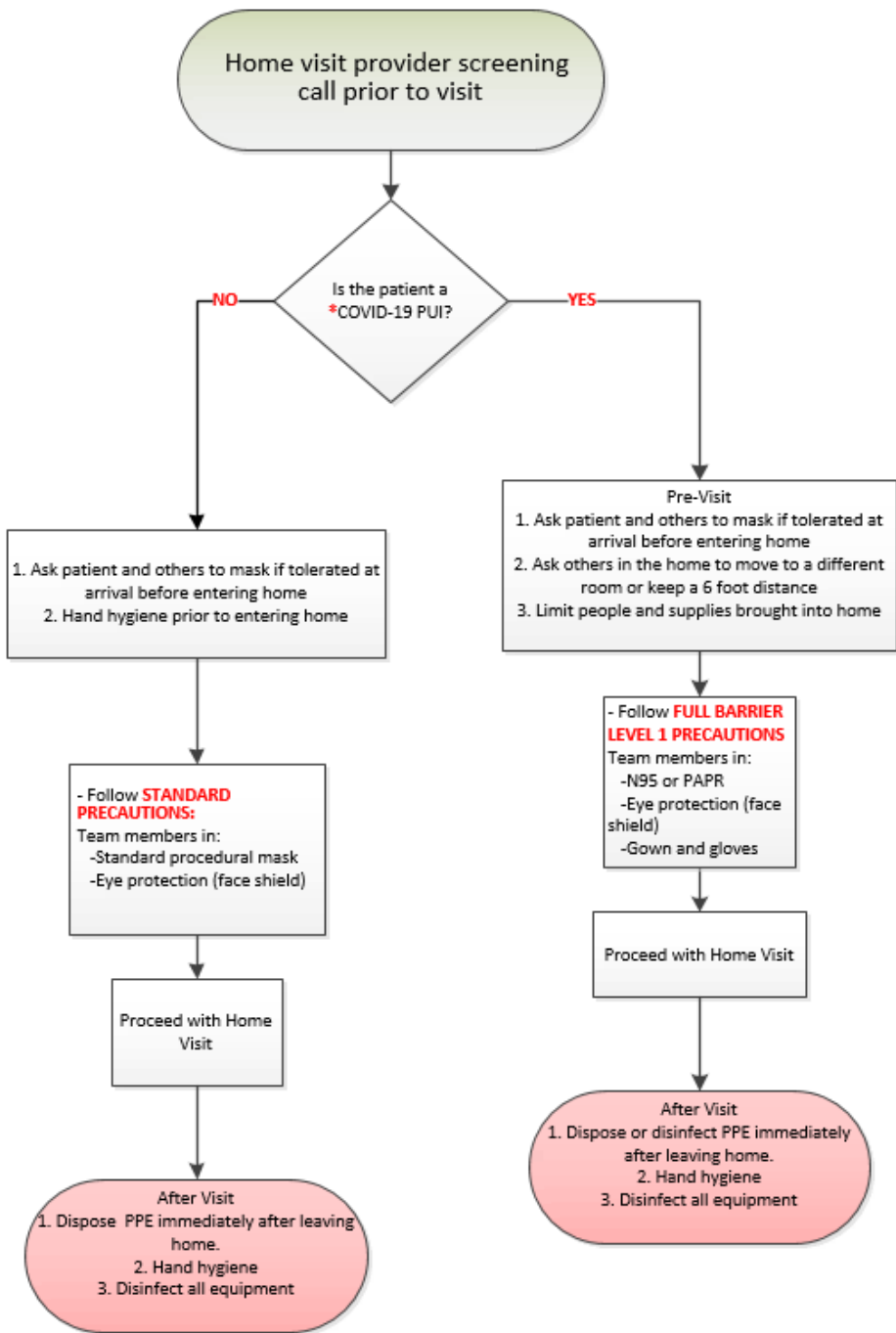


Diagnostic Algorithm - Home Visits

January 2023—Version 17.0

This algorithm covers the screening process and PPE requirements for home visits.

KEY POINTS



- *COVID-19 Person Under Investigation (PUI) Criteria – person has one or more of the following symptoms:**
 - 1. Upper / Lower respiratory symptoms
 - Cough
 - Shortness of breath or difficulty breathing
 - Congestion or runny nose
 - Sore throat
 - 2. New loss of taste or smell
 - 3. Patient reports contact with someone who was confirmed or suspected to have COVID-19 within the last 10 days
 - 4. Imaging (CXR or CT chest) consistent with COVID-19 infection
 - 5. GI symptoms (not otherwise explained)
 - Nausea or vomiting
 - Diarrhea
- Highly consider testing*
- Fever>100, chills or rigors
 - New headache
 - New, otherwise unexplained fatigue

PPE Reuse Guidelines

Please refer to “Covid-19 Personal Protective Equipment” on the provider COVID internet page under PPE.



Infection Prevention Task Force

This team represents expertise in infection prevention and operations.. If you would like further information on infection prevention components of this pathway, please contact Infection Prevention (Robbinsdale) at Main line: (763) 581-4660 Mon-Fri: 8am-4:30pm, Rounder on-call M-F: (612) 580-0218 or (Maple Grove) at (763) 581-1234

MEMBERS:

Infection Prevention: Stephanie Swanson, Katherine Grimm

Infectious Disease: Leslie Baken

Clinical: Jeffrey Vespa, Pamela Doorenbos

Clinical Operations: Wendy Ulferts, Steve Horstmann, Sheryl Vugteveen, Lindsay Wacker

Clinics: Kate Sullivan , Bridget Peppin, Aleda Jordan

If you would like further information about Clinical Programs and Integration, please contact the System Medical Director for Quality, Jeffrey Vespa, MD— Jeffrey.Vespa@NorthMemorial.com or Anna Rees, Manager—Anna.Rees@NorthMemorial.com

Revision History

This document is active and further recommendations are forthcoming. It will be updated as additions develop.

Revision	Description of Changes	Approvals	Date
17.0	Updated PUI criteria	IPTF	01-03-23