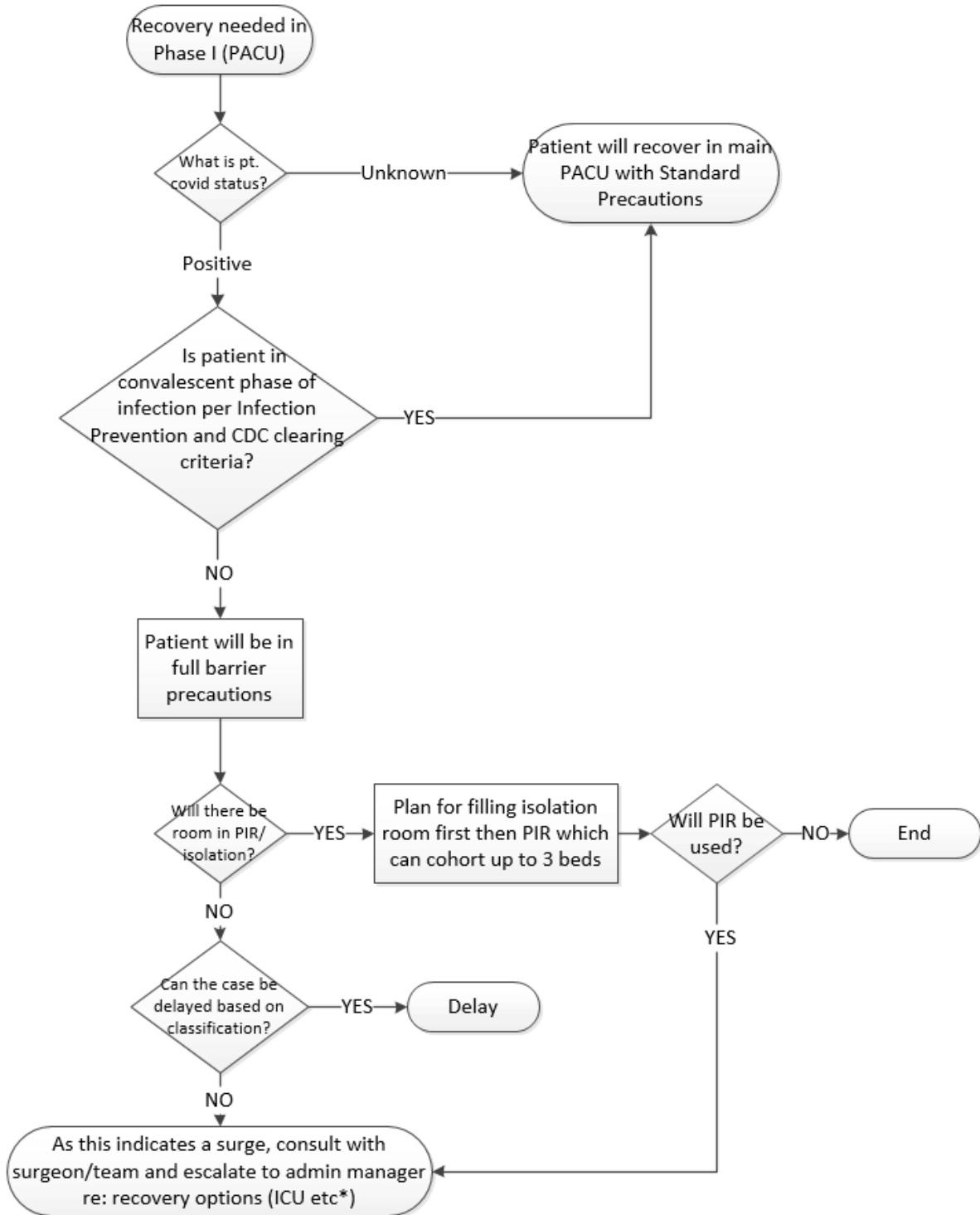


The following are our recommendation for an approach to pre-procedure recovery planning for NMHH.



*Team could consider recovery in the OR if absolutely necessary (depending on staffing, hours, etc.) PACU RN could go to the OR to help the CRNA, after which the patient would go to phase 2 (if same day surgery) or to their inpatient room.



Pre-Procedure PACU Recovery Planning for North Memorial Health Hospital

January 2023—Version 3.0

Changes Since Last Version

This document is active and further recommendations are forthcoming. It will be updated as additions develop.

Revision	Description of Changes	Approvals	Date
3	Updated 'unknown' branch to indicate plan for stopping universal screening. Updated precautions to use in this case.	Infection Prevention Task Force / PACU / Anesthesia	1/3/23