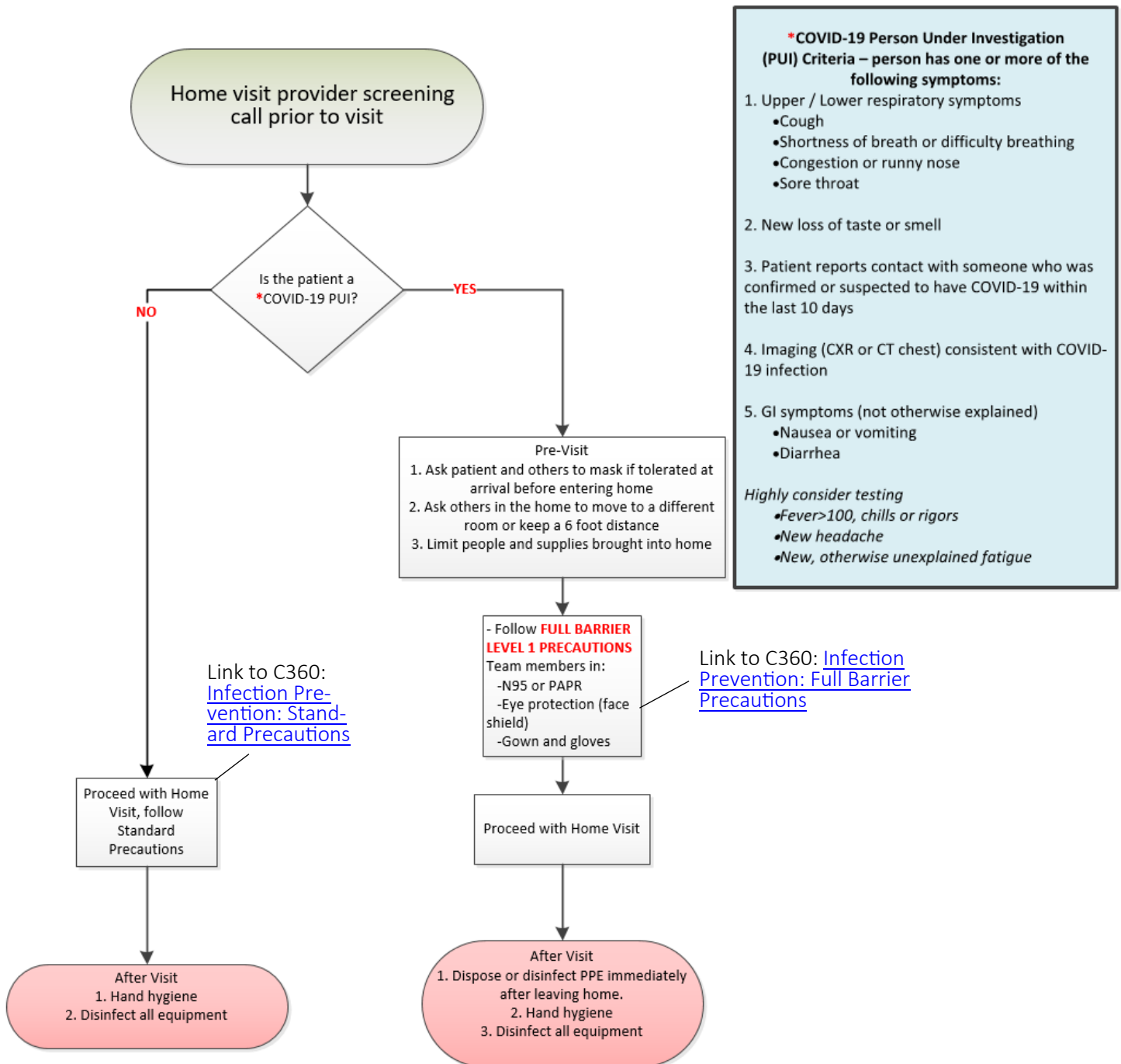


Diagnostic Algorithm - Home Visits

April 2023—Version 17.0

This algorithm covers the screening process and PPE requirements for home visits.

KEY POINTS





Infection Prevention Task Force

This team represents expertise in infection prevention and operations.. If you would like further information on infection prevention components of this pathway, please contact Infection Prevention (Robbinsdale) at Main line: (763) 581-4660 Mon-Fri: 8am-4:30pm, Rounder on-call M-F: (612) 580-0218 or (Maple Grove) at (763) 581-1234

MEMBERS:

Infection Prevention: Stephanie Swanson, Katherine Grimm

Infectious Disease: Leslie Baken

Clinical: Jeffrey Vespa, Pamela Doorenbos

Clinical Operations: Wendy Ulferts, Steve Horstmann, Sheryl Vugteveen, Lindsay Wacker

Clinics: Kate Sullivan , Bridget Peppin, Emily Leshon, Scott Dorow, Nicole Kapinos

If you would like further information about Clinical Programs and Integration, please contact the System Medical Director for Quality, Jeffrey Vespa, MD— Jeffrey.Vespa@NorthMemorial.com or Anna Rees, Manager— Anna.Rees@NorthMemorial.com

Revision History

This document is active and further recommendations are forthcoming. It will be updated as additions develop.

Revision	Description of Changes	Approvals	Date
17.0	Updated the 'no' branch to reflect de-escalation of universal masking. Erased PPE re-use guidelines as that is not in effect.	IPTF	04-11-23