

Scheduling Elective Outpatient Appointments

April 2023—Version 8.0

This algorithm covers the scheduling of elective outpatient appointments and includes:

Page 1: COVID Positive Patients

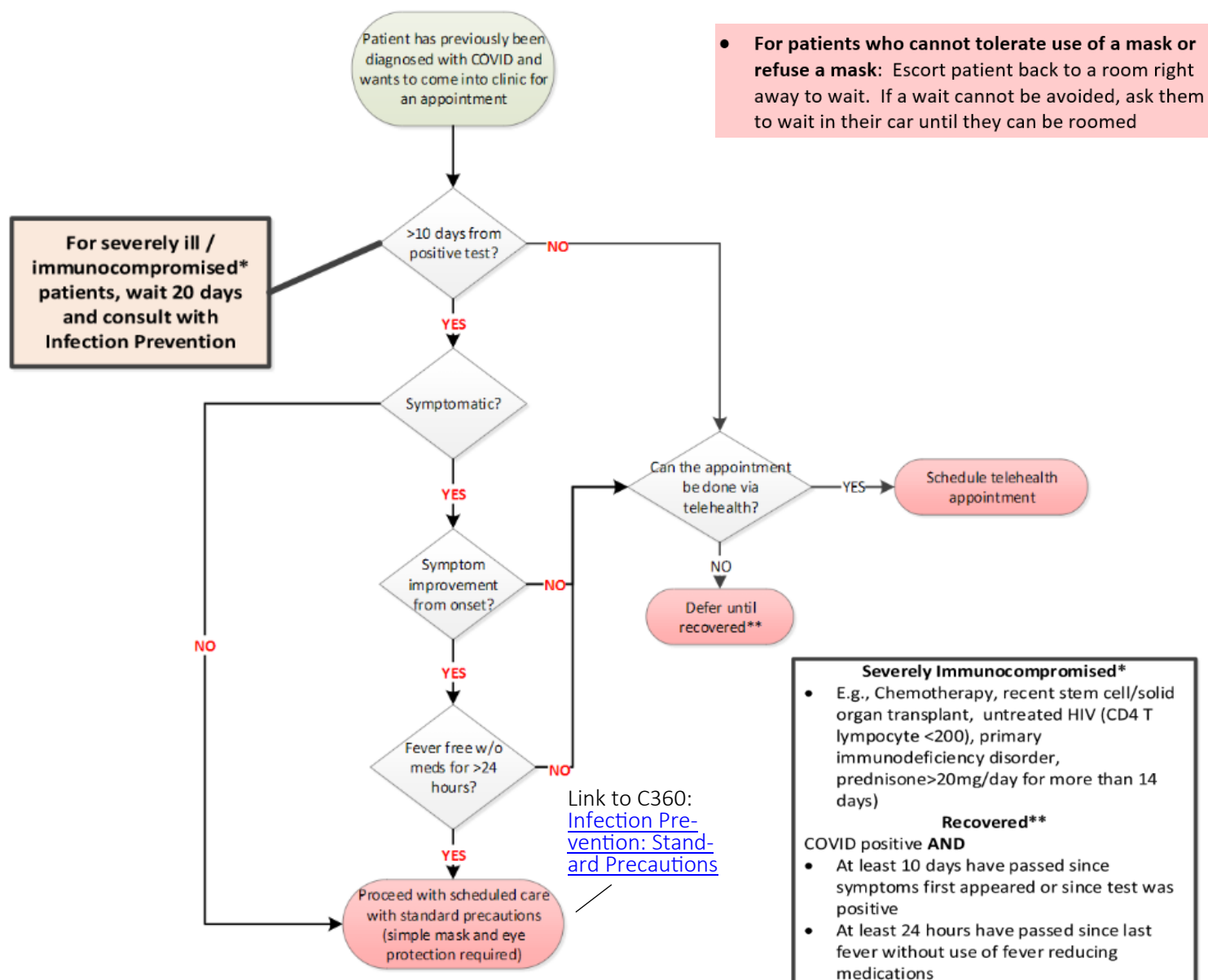
Page 2: COVID Exposed Patients

Page 3: COVID PUI Patients

KEY POINTS

Scheduling Elective* Outpatient Appointments for COVID Positive Patients

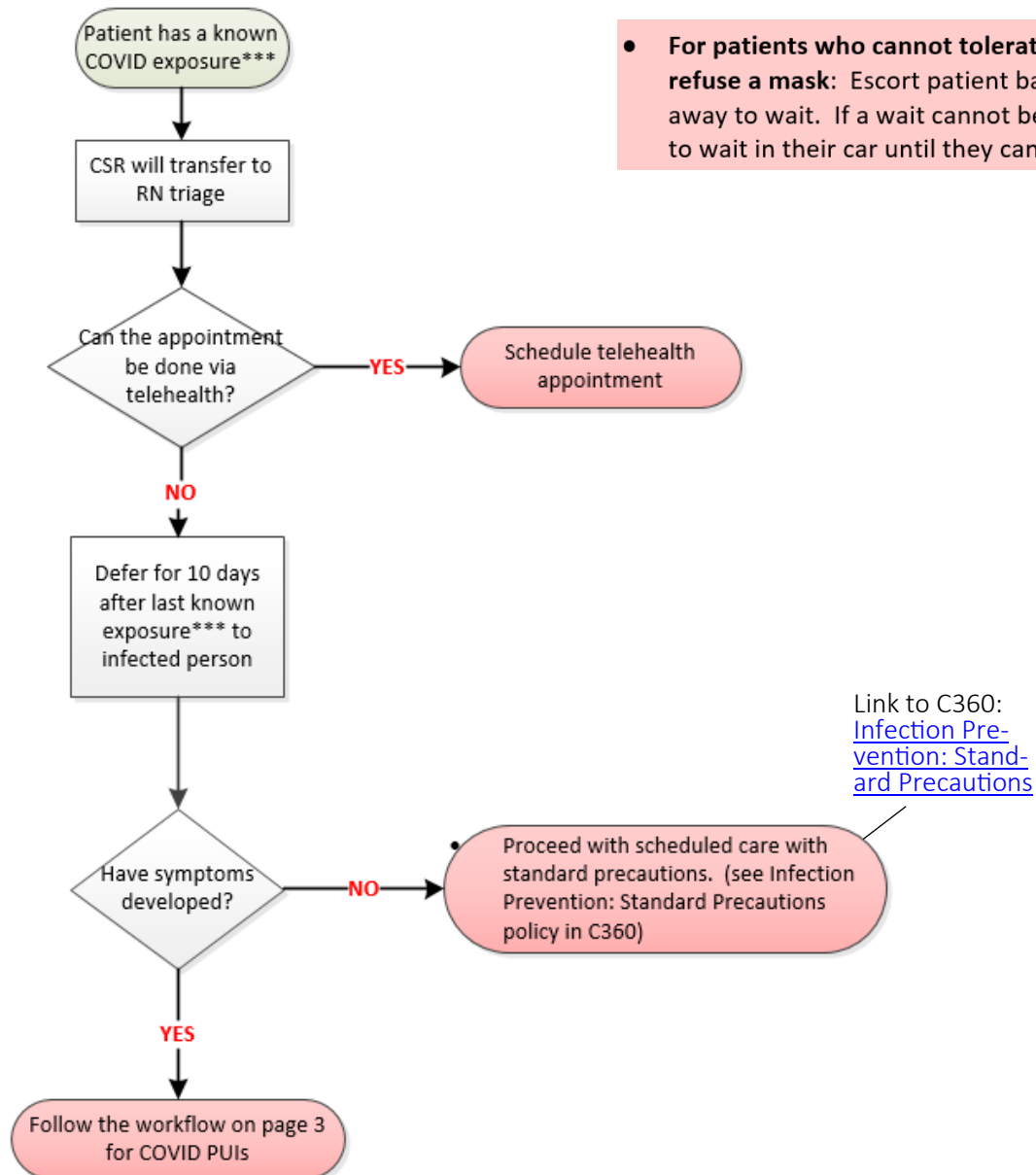
Elective outpatient Appointment: All Blaze Health preventative care appointments (ie. Well child, physicals, medical wellness, etc.)





Scheduling Elective* Outpatient Appointments for COVID Exposed Patients

Elective outpatient Appointment: All Blaze Health preventative care appointments (ie. Well child, physicals, medical wellness, etc.)



- **For patients who cannot tolerate use of a mask or refuse a mask:** Escort patient back to a room right away to wait. If a wait cannot be avoided, ask them to wait in their car until they can be roomed

Recovered**
COVID positive **AND**

- At least 10 days have passed since symptoms first appeared or since test was positive
- At least 24 hours have passed since last fever without use of fever reducing medications

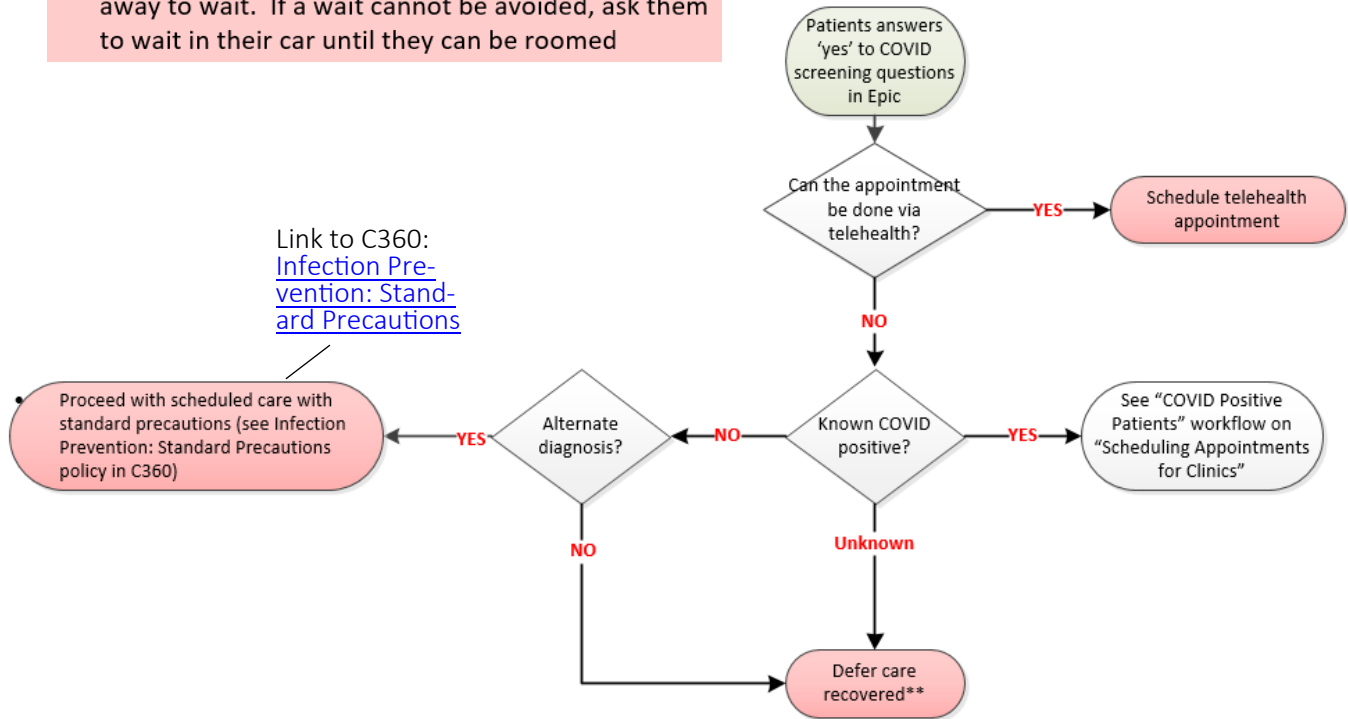
- ***Exposure: >15 minutes within 6 feet**
- Exposure to a person with COVID-19 who has symptoms in the period including 2 days before symptom onset until they met criteria for isolation discontinuation
- OR**
- Exposure to a person with COVID-19 who tested positive even without symptoms including 2 days before their last test and for 10 days following test



Scheduling Elective* Outpatient Appointments for COVID PUI Patients

Elective outpatient Appointment: All Blaze Health preventative care appointments (ie. Well child, physicals, medical wellness, etc.)

- **For patients who cannot tolerate use of a mask or refuse a mask:** Escort patient back to a room right away to wait. If a wait cannot be avoided, ask them to wait in their car until they can be roomed



Recovered**

COVID positive **AND**

- At least 10 days have passed since symptoms first appeared or since test was positive
- At least 24 hours have passed since last fever without use of fever reducing medications



Infection Prevention Task Force

This team represents expertise in infection prevention and operations.. If you would like further information on infection prevention components of this pathway, please contact Infection Prevention (Robbinsdale) at Main line: (763) 581-4660 Mon-Fri: 8am-4:30pm, Rounder on-call M-F: (612) 580-0218 or (Maple Grove) at (763) 581-1234

MEMBERS:

Infection Prevention: Stephanie Swanson, Katherine Grimm

Infectious Disease: Leslie Baken

Clinical: Jeffrey Vespa, Pamela Doorenbos

Clinical Operations: Wendy Ulferts, Steve Horstmann, Sheryl Vugteveen, Lindsay Wacker

Clinics: Kate Sullivan , Bridget Peppin, Aleda Jordan, Emily Leshon, Scott Dorow, Nicole Kapinos

If you would like further information about Clinical Programs and Integration, please contact the System Medical Director for Quality, Jeffrey Vespa, MD— Jeffrey.Vespa@NorthMemorial.com or Anna Rees, Manager—Anna.Rees@NorthMemorial.com

Revision History

This document is active and further recommendations are forthcoming. It will be updated as additions develop.

Revision	Description of Changes	Approvals	Date
8	Pages 1-3: Updated pink box to simplify process for mask refusal to remove recommendation for face shield. Page 2-3: Changed recommendation to refer to Standard Precautions policy in C360 instead of PPE document.	IPTF	4/11/23