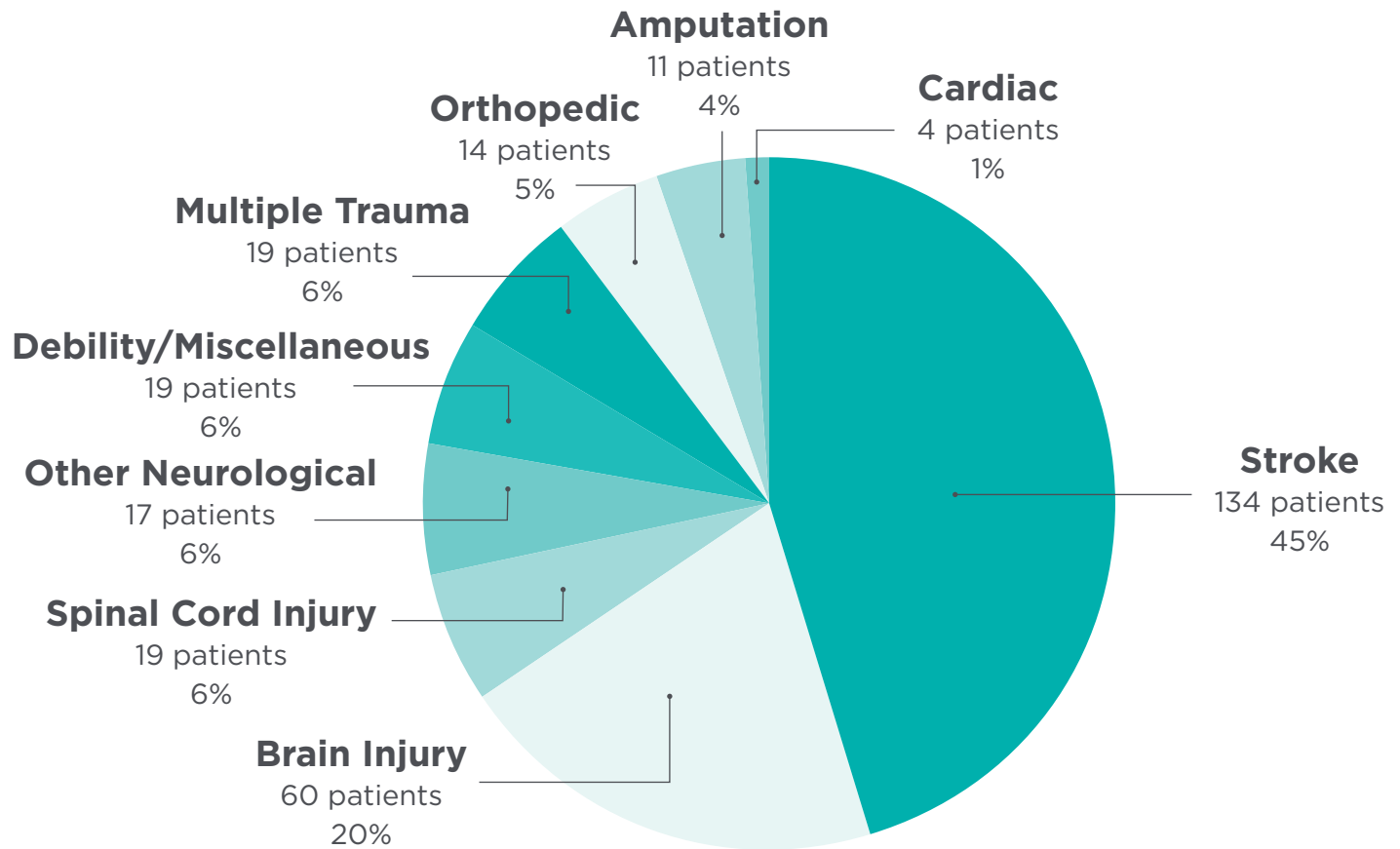


North Memorial Health (NMH) Inpatient Rehabilitation

2024 Annual Report

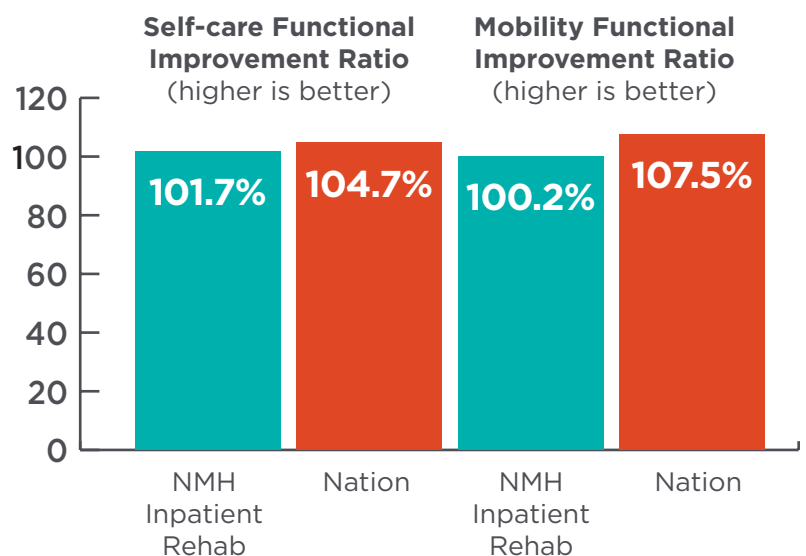


297



TOTAL PATIENTS

- 296 adults
- 1 adolescent (under 18 yrs)
- 60% male
- 40% female



AVERAGE LENGTH OF STAY



All diagnoses

NMH: 12.6 days
Nation: 12.1 days

Stroke

NMH: 13.8 days
Nation: 12.6 days

Brain Injury

NMH: 10.5 days
Nation: 10.5 days

Spinal Cord Injury

NMH: 18 days
Nation: 17.2 days

Other Neurological

NMH: 11 days
Nation: 10.8 days

Orthopedic

NMH: 9.3 days
Nation: 9.4 days

Amputation

NMH: 14.2 days
Nation: 12.7 days

Cardiac

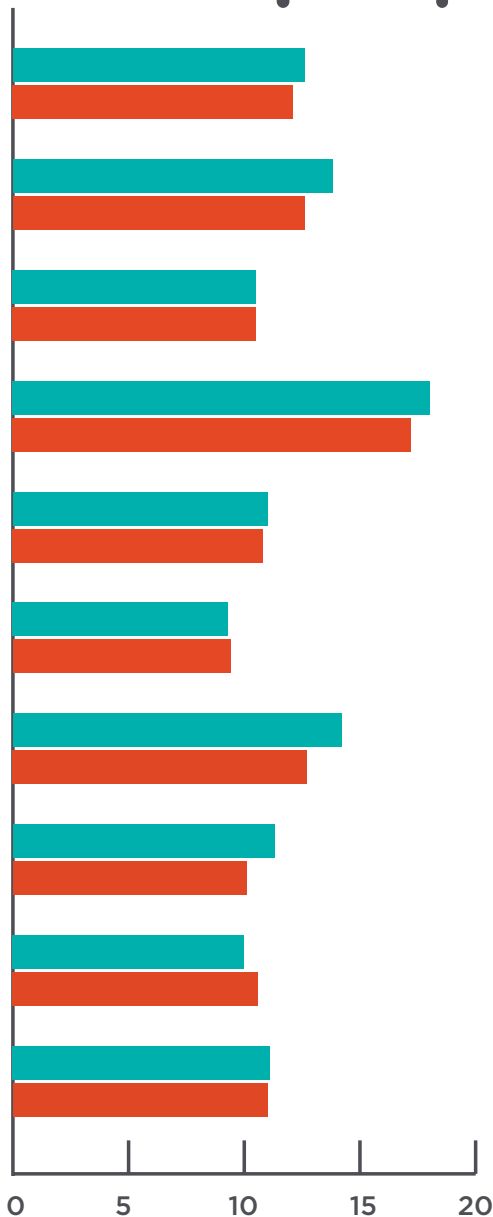
NMH: 11.3 days
Nation: 10.1 days

Debility/Miscellaneous

NMH: 10 days
Nation: 10.6 days

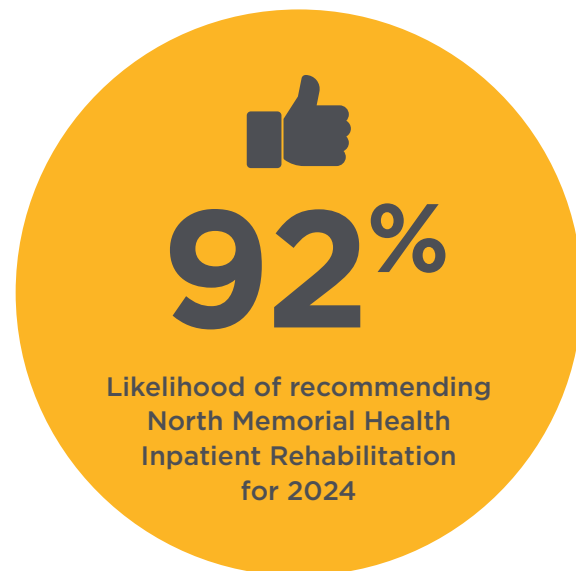
Multiple Trauma

NMH: 11.1 days
Nation: 11 days



DISCHARGE DESTINATION

Destination	NMH Mean %	National Adjusted Mean %
Community	79.8%	84.8%
Nursing Facility	15.2%	7.5%
Hospital	5.1%	7.4%



NMH AVERAGE AGE

